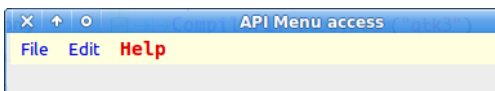


1. Workaround for PureBasic Menues on Linux ...

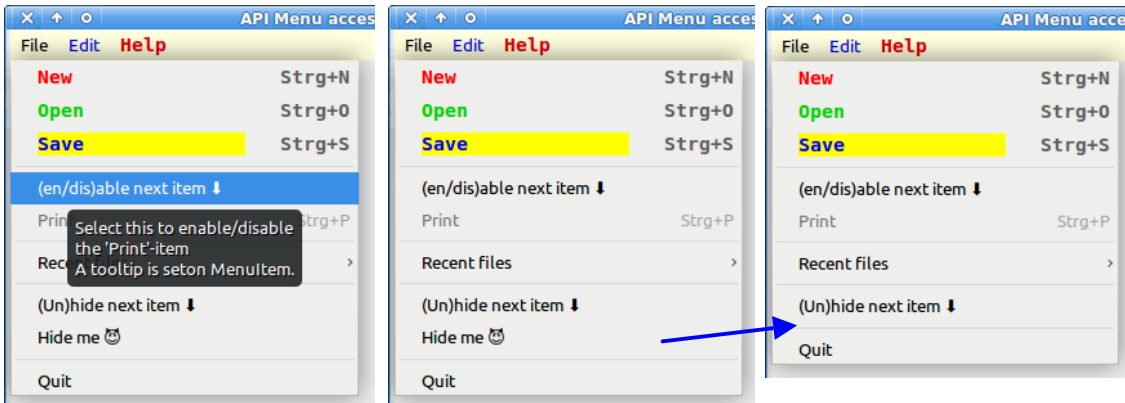
1.1 Additional features for PureBasic menues and popups on Linux

Some features are only available on Gtk3 subsystem (at the moment?)

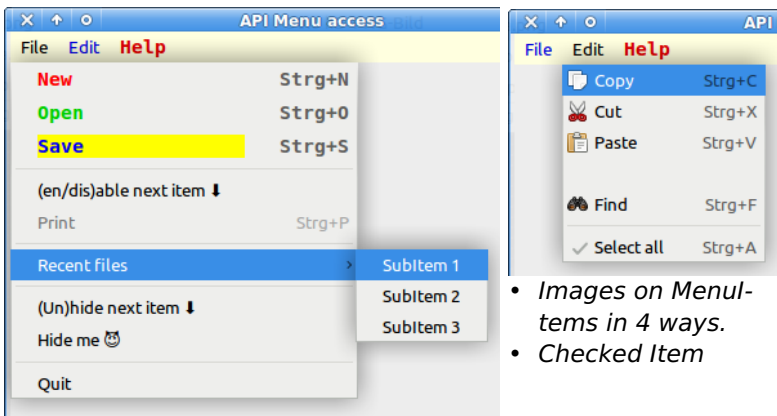
- **Colored background** on MenuBars
- Colored background on MenuItems
- **Colored font** on all OR specific titles
- Colored font on MenuItems
- Change **font** on all MenuBar-Titles or corresponding MenuItems
- Change font on single Titles or Items
- **Tooltips** on Menu titles
- Tooltips on Menu items
- Enable / **disable** Menu items
- **Hide** / unhide Menu items
- Set **checked**/unchecked (only with PB function)
- **Image** on Menu items (deprecated on later Gtk3) with
 - from file
 - from stock (named icon)
 - from default-system-icon (from Pixbuf)
 - embedded image (from Pixbuf)
- **Callback** for popped up Menues or Submenues
- **Tearoff** menues (as long as this Gtk-function works ;-)



- Colored background for MenuBar
- Colored font on all titles
- Change font on single title

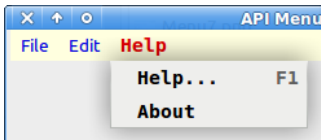


- Colored items fonts
 - Change item fonts
 - Colored item background
 - disabled item
 - Tooltip on item
- Hide items

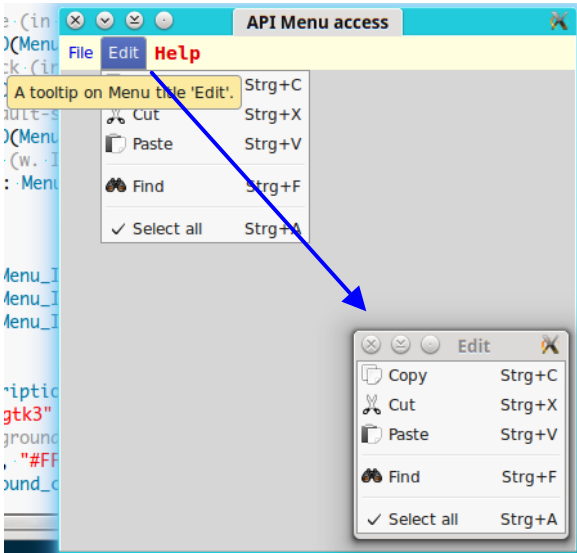


- Images on MenuItems in 4 ways.
- Checked Item

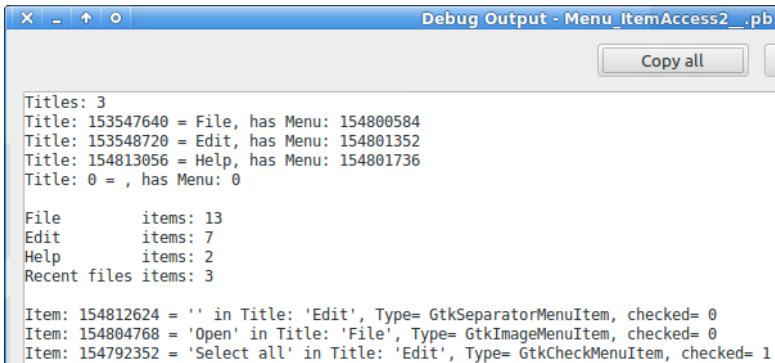
Submenu with Callback on opening



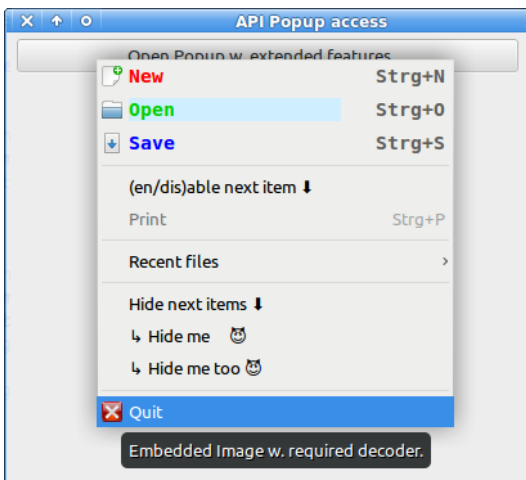
- Changed title font with automatically changed fonts on all corresponding MenuItems
- Colored single title foreground



- Tearoff-Menu on Edit-Menu
- Tooltip on Title
- Callback on Edit menu opening



Query many Menu and Item infos



Popup with extended features

1.2 Access on tiltes and items as tree with indices:

- MenuBar with titles: 0 ... n
- Menues on tiltes: 0 ... n
- Items in Menues
- Submenüs on MenuItem: 0 ... n
- → Submenüs on MenuItem: 0 ... n ...

The **nthItem** (marked with '0...n') is the consecutive number (or position, beginning with '0') within each menu. It start with '0' on each menu, PB-Menu MenuBars() are counted too!

1.3 Examples how to get pointer to menu OR popup elements

In the case of Popups, one can spare out the expression "**Menu_GetItemMenu(Menu_ItemID(MenuID(#Menu), 0...n))**" and set **MenuID(#Popup)** instead, cause you don't the the MenuBar with titles!

1.3.1 The main menu (PureBasic menu)

Menu:

MenuID(#Menu)

= MenuBar (NOT PB MenuBar which is a SeparatorMenuItem ;-)

1.3.2 A title item

Menu:

Menu_ItemID(MenuID(#Menu), 0...n)

1.3.3 Menu from title item = popup

Menu:

Menu_GetItemMenu(Menu_ItemID(MenuID(#Menu), 0...n))

Popup:

MenuID(#Popup)

1.3.4 Item in menu from title item OR Popup item

Menu:

Menu_ItemID(Menu_GetItemMenu(Menu_ItemID(MenuID(#Menu), 0...n)), 0...n)

Popup:

Menu_ItemID(MenuID(#Popup), 0...n)

1.3.5 Submenu on item in menu from title item OR Popup Submenu on item

Menu:

Menu_GetItemMenu(Menu_ItemID(Menu_GetItemMenu(Menu_ItemID(MenuID(#Menu), 0...n)), 0...n))

Popup:

Menu_GetItemMenu(Menu_ItemID(MenuID(#Popup), 0...n))

1.4 Examples how to get infos from menu elements

1.4.1 A menu title label (text)

Menu_GetItemLabel(Menu_ItemID(MenuID(#Menu), 0...n))

1.4.2 An menu item label (text) OR popup label

Menu:

```
Menu_GetItemLabel( Menu_ItemID(Menu_GetItemMenu(Menu_ItemID(MenuID(#Menu), 0...n)), 0...n) )
```

Popup:

```
Menu_GetItemLabel( Menu_ItemID(MenuID(#Popup), 0...n) )
```

1.4.3 An menu item type OR popup item type (GtkName)

Menu:

```
Menu_GetItemType( Menu_ItemID(Menu_GetItemMenu(Menu_ItemID(MenuID(#Menu), 0...n)), 0...n) )
```

Popup:

```
Menu_GetItemType( Menu_ItemID(MenuID(#Popup), 0...n) )
```

1.4.4 An menu item OR popup item visibility ('hide'-state)

Menu:

```
Menu_GetItemInvisible( Menu_ItemID(Menu_GetItemMenu(Menu_ItemID(MenuID(#Menu), 0...n)), 0...n) )
```

Popup:

```
Menu_GetItemInvisible( Menu_ItemID(MenuID(#Popup), 0...n) )
```

1.5 Examples how to set an item property

1.5.1 Set menu item OR popup item visibility ('hide'-state)

Menu:

```
Menu_SetItemInvisible( Menu_ItemID(Menu_GetItemMenu(Menu_ItemID(MenuID(#Menu), 0...n)), 0...n), #True )
```

Popup:

```
Menu_SetItemInvisible( Menu_ItemID(MenuID(#Popup), 0...n), #True )
```

1.5.2 Set menu item OR popup item image

Menu:

```
Menu_SetItemImage( Menu_ItemID(Menu_GetItemMenu(Menu_ItemID(MenuID(#Menu), 0...n)), 0...n), *Image )
```

Popup:

```
Menu_SetItemImage( Menu_ItemID(MenuID(#Popup), 0...n), *Image )
```

2. Functions for Menue-/PopupExtension

2.0.1 Menu_ItemID(*MenuID, nthItem)

Reads the GtkWidget-pointer (address) of an item or title.

The same as MenuID() in PureBasic for the whole menu but for the single entries.

Parameters

*MenuID	NOT what's called MenuID in PB!
	The address of an the current number within a menu.
	The menu can be the
	MenuID(#Menu) from PureBasic for the titles, or
	Menu on titles or
	SubMenu on items in Menues.

Index the current number (index) within the menu from *MenuID, (0 ... n)

Return value

Pointer / adress (=GtkWidget) of the MenuItem or #Null

2.0.2 Menu_CountItems(*MenuID)

Count the items within a MenuBar or Menu

Parameters

*MenuID NOT what's called MenuID in PB!
The address of an the current number within a menu.
The menu can be the
MenuID(#Menu) from PureBasic for the **titles**, or
Menu on *titles* or
SubMenu on *items* in Menues.

Return value

Number of Items in Menu or #Null

2.0.3 Menu_GetItemMenu(*MenuItemID)

Reads the GtkWidget-pointer (address) of a Menu or Submenu assigned to a Title or a MenuItem

Parameters

*MenuItemID NOT what's called MenuItemID in PB!
The address (=widget, from **Menu_ItemID(*MenuID, nthItem)**) of the
title or *item*.

Return value

Pointer / adress (=GtkWidget) of the Menu or #Null

2.0.4 Menu_GetItemChecked(*MenuItemID)

Read whether a MenuItem is 'checked'.

Parameters

*MenuItemID NOT what's called MenuItemID in PB!
The address (=widget, from **Menu_ItemID(*MenuID, nthItem)**) of the
title or *item*.

Return value

1 for checked, 0 for unchecked or if Item is no CheckItem

2.0.5 Menu_GetItemDisabled(*MenuItemID)

Read whether a MenuItem is 'disabled'.

Parameters

*MenuItemID NOT what's called MenuItemID in PB!
The address (=widget, from **Menu_ItemID(*MenuID, nthItem)**) of the
title or *item*.

Return value

1 for disabled, 0 for not disabled

2.0.6 Menu_GetItemInvisible(*MenuItemID)

Read whether a MenuItem is 'hidden'.

Parameters

*MenuItemID NOT what's called MenuItemID in PB!
The address (=widget, from **Menu_ItemID(*MenuID, nthItem)**) of the *title* or *item*.

Return value

1 for hidden, 0 for visible

2.0.7 Menu_GetItemLabel(*MenuItemID)

Reads the Text in the *title* or *item*.

Parameters

*MenuItemID NOT what's called MenuItemID in PB!
The address (=widget, from **Menu_ItemID(*MenuID, nthItem)**) of the *title* or *item*.

Return value

Item label (readable text) as string or "".

2.0.8 Menu_GetItemType(*MenuItemID)

Reads the Gtk-Type (gtk_widget_get_name()) of the item, like 'GtkMenu', 'GtkMenuItem', 'GtkRadioMenuItem', 'GtkCheckMenuItem', 'GtkSeparatorMenuItem', ('GtkImageMenuItem').

Parameters

*MenuItemID NOT what's called MenuItemID in PB!
The address (=widget, from **Menu_ItemID(*MenuID, nthItem)**) of the *title* or *item*.

Return value

GtkWidget type as string or "".

2.0.9 Menu_GetSize(*Widget, *Width.integer, *Height.integer)

Reads width and height of Menu or MenuItem.

Parameters

*Widget Address of (Pointer to) Menu, Submenu or MenuItem.
*Width Integer to place the width of the widget
*Height Integer to place the height of the widget

Return value

#True if **Menu_GetSize()** was successfull, or #False.

2.0.10 Menu_SetItemLabel(*Widget, label.s)

Set the Text in item- or title-label text.

Parameters

*Widget	Address of (Pointer to) Menu, Submenu or MenuItem.
label.s	The new text

Return value

None

2.0.11 Menu_SetItemDisabled(*MenuItemID, Disabled)

Set a MenuItem as disabled (greyed) or abled.

Parameters

*MenuItemID	NOT what's called MenuItemID in PB! The address (=widget, from Menu_ItemID(*MenuID, nthItem)) of the <i>title</i> or <i>item</i> .
Disabled	1 (or #True) for disabled, 0 (or #False) for abled.

Return value

None

2.0.12 Menu_SetItemInvisible(*MenuItemID, Invisible)

Hides or Shows a MenuItem. The entry is omitted.

Parameters

*MenuItemID	NOT what's called MenuItemID in PB! The address (=widget, from Menu_ItemID(*MenuID, nthItem)) of the <i>title</i> or <i>item</i> .
Invisible	1 (or #True) for hidden, 0 (or #False) for visible.

Return value

None

2.0.13 Menu_SetItemImage(*MenuItemID, *Image)

Set an image for a MenuItem (as long as Gtk3 let you ;-)

Parameters

*MenuItemID	NOT what's called MenuItemID in PB! The address (=widget, from Menu_ItemID(*MenuID, nthItem)) of the <i>title</i> or <i>item</i> .
*Image	A GtkImage from File : gtk_image_new_from_file() from Iconname : gtk_image_new_from_icon_name() from System-Icon : gtk_image_new_from_pixbuf() embedded : gtk_image_new_from_pixbuf()

Return value

None